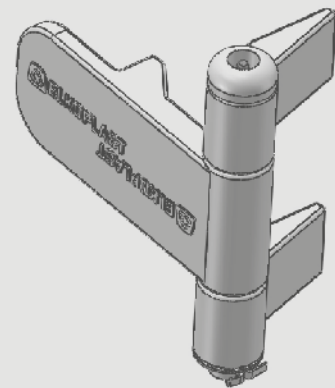
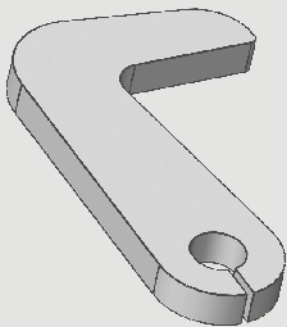


## Ersatzteile für Abrollcontainer



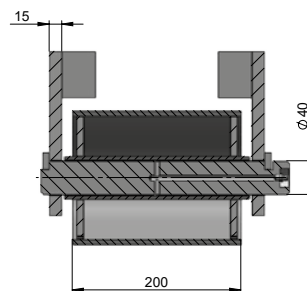
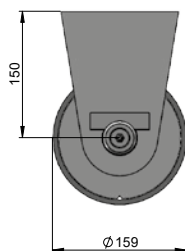
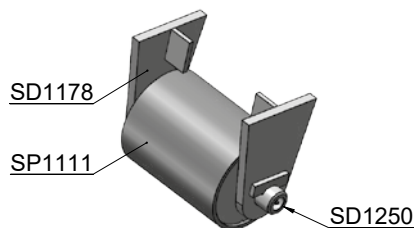
---

Rollen  
Scharniere  
Leitern  
Aunahmehaken  
Türverriegelung  
Dachheber  
Andere Teile

# Rollen

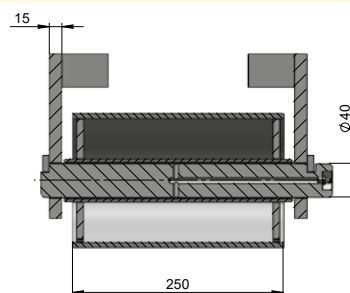
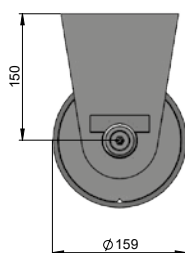
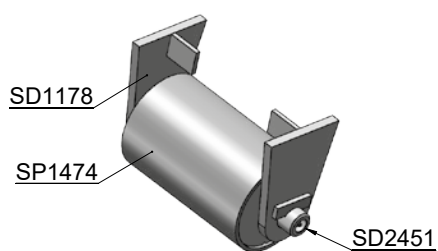


## Stahlrolle Ø159×200 SP1110



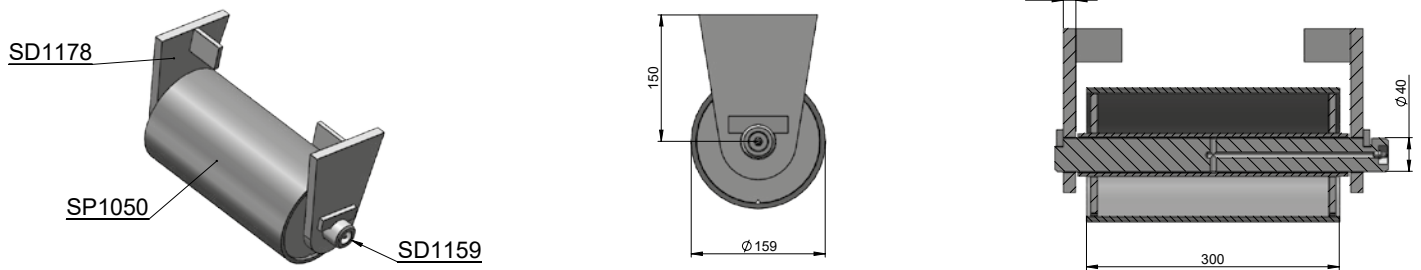
Bestellcode	Bezeichnung	Stück
SP1110	Stahlrolle Ø159×200 komplett	1
SP1111	Rolle	1
SD1250	Rollachse Ø40×295	1
SD1178	Rollenhalter 195×42	2

## Stahlrolle Ø159×250 SP1475



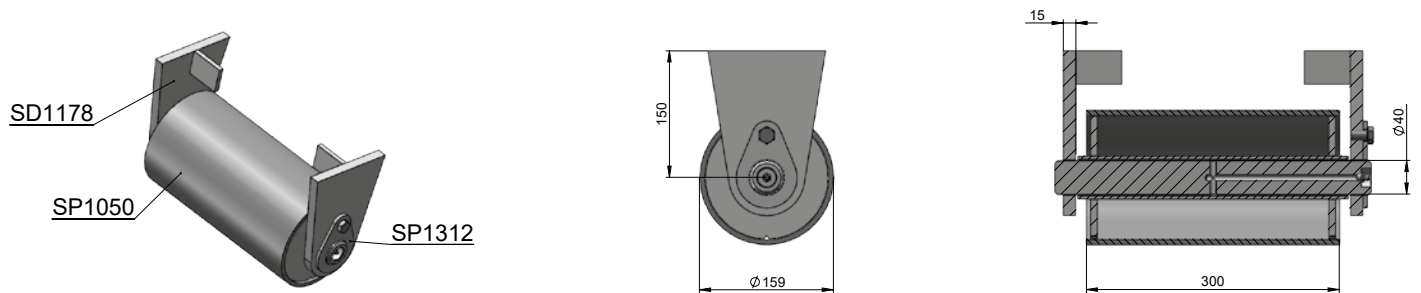
Bestellcode	Bezeichnung	Stück
SP1475	Stahlrolle Ø159×250 komplett	1
SP1474	Rolle	1
SD2451	Rollachse Ø40×245	1
SD1178	Rollenhalter 195×42	2

## Stahlrolle Ø159×300 SP1051



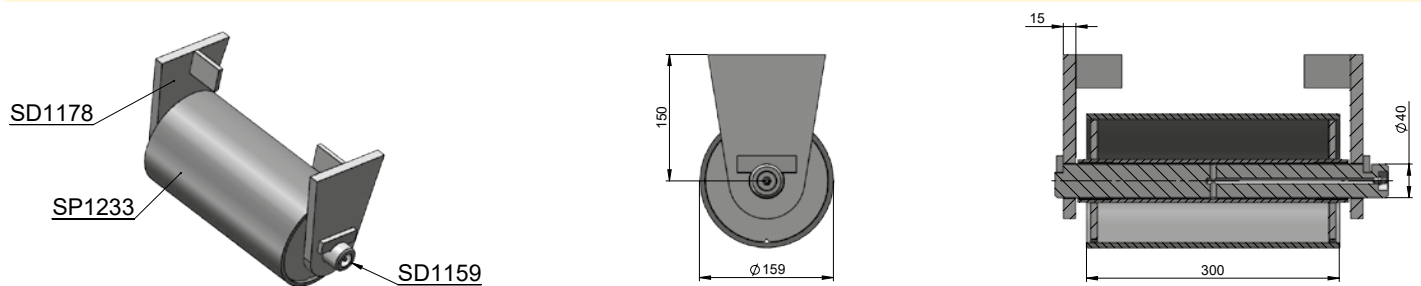
Bestellcode	Bezeichnung	Stück
SP1051	Stahlrolle Ø159×300 komplett	1
SP1050	Rolle	1
SD1159	Rollachse Ø40×395	1
SD1178	Rollenhalter 195×42	2

## Anschraubbare Stahlrolle Ø159×300 SP1313



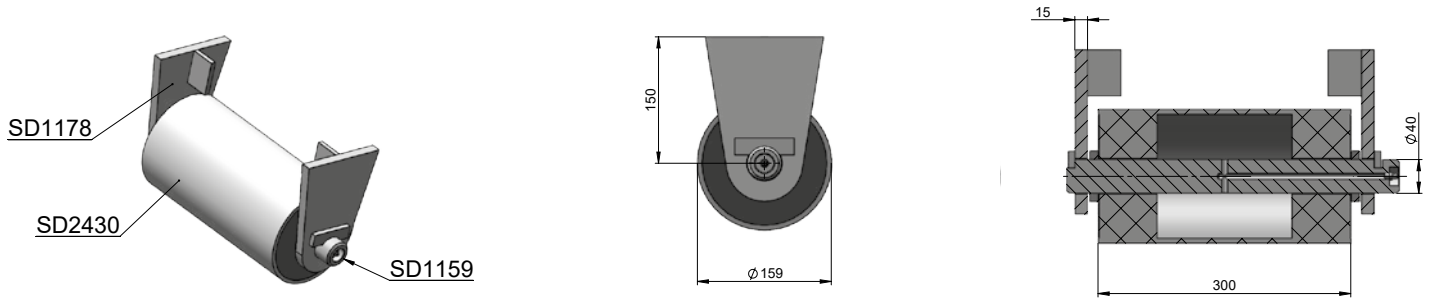
Bestellcode	Bezeichnung	Stück
SP1313	anschraubbare Stahlrolle Ø159×300 komplett	1
SP1050	Rolle	1
SP1312	Rollachse Ø40×375 schraubbar	1
SD1178	Rollenhalter 195×42	1

## Stahlrolle mit Bronzelager Ø159×300 SP1232



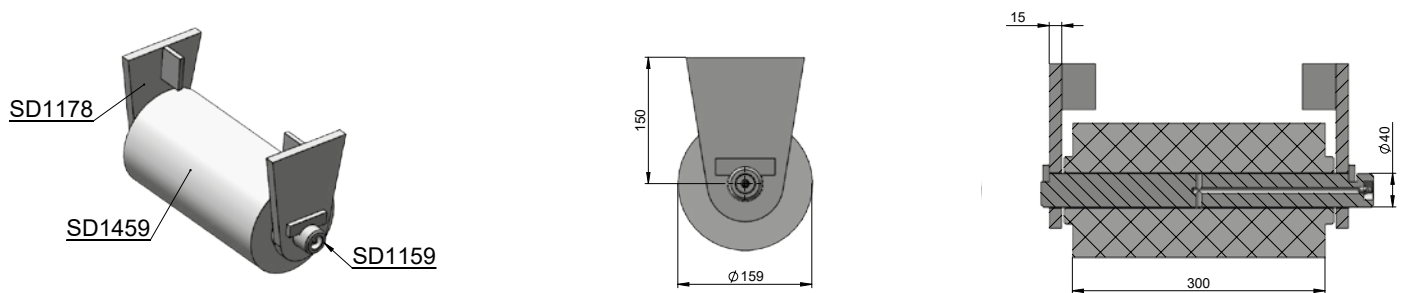
Bestellcode	Bezeichnung	Stück
SP1232	Stahlrolle mit Bronzelager Ø159×300 komplett	1
SP1233	Rolle mit Bronzelager	1
SD1159	Rollachse Ø40×395	1
SD1178	Rollenhalter 195×42	2

## Polyamidrolle mit Stahlmantel Ø159×300 (PSOP) SP1472



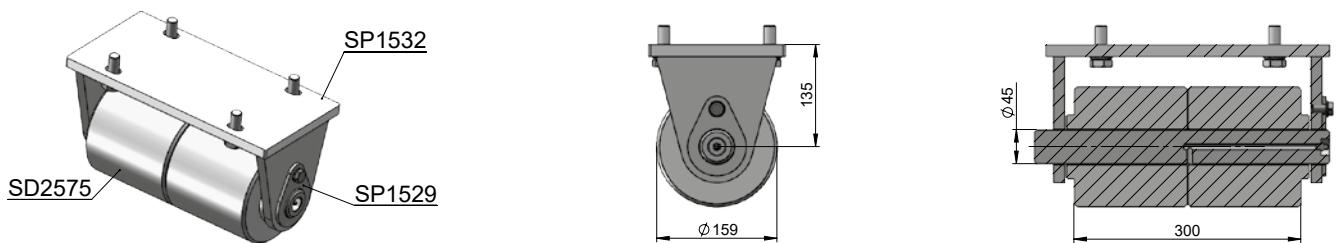
Bestellcode	Bezeichnung	Stück
SP1472	Polyamidrolle mit Stahlmantel Ø159×300 (PSOP) komplett	1
SD2430	Rolle	1
SD1159	Rollachse Ø40×395	1
SD1178	Rollenhalter 195×42	2

## Polyamidrolle Ø159×300 SP1054



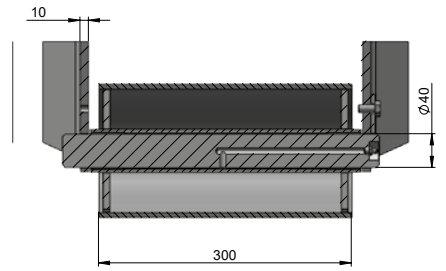
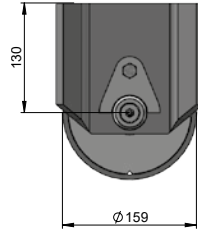
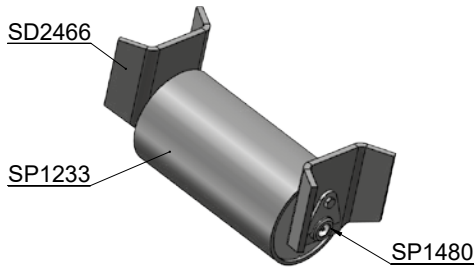
Bestellcode	Bezeichnung	Stück
SP1054	Polyamidrolle Ø159×300 komplett	1
SD1459	Rolle	1
SD1159	Rollachse Ø40×395	1
SD1178	Rollenhalter 195×42	2

## Polyamidrolle, zweiteilig zum Anschrauben Ø159×300 SP1527



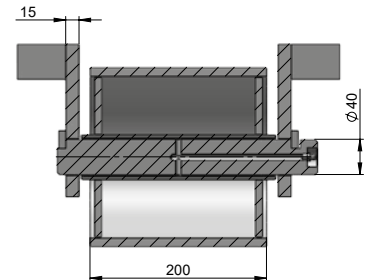
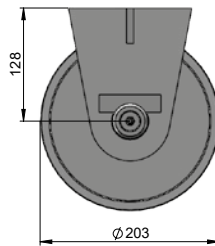
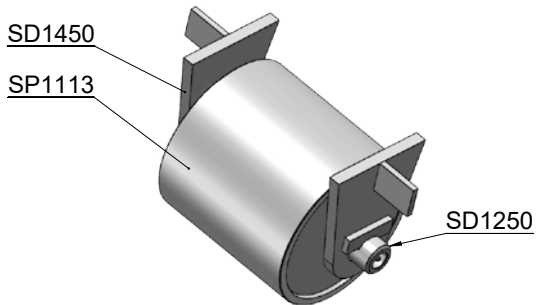
Bestellcode	Bezeichnung	Stück
SP1527	Polyamidrolle zweiteilig zum Anschrauben Ø159×300 komplett	1
SD2575	Rolle	1
SP1529	Rollachse Ø45×390 1	1
SP1532	Rollenhalter	1

## Stahlrolle ALST Ø159×300 SP1481



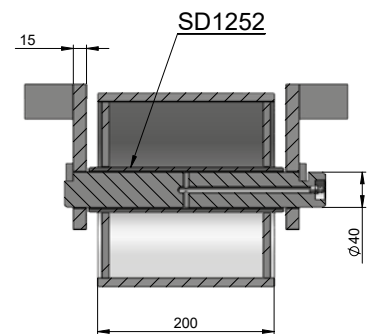
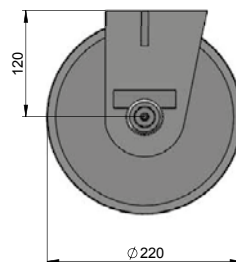
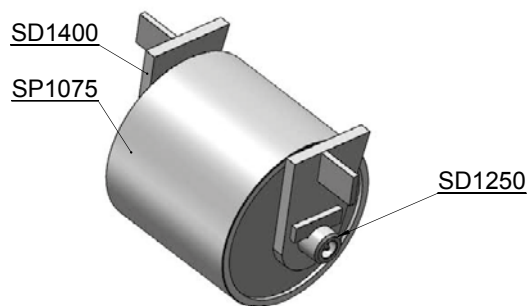
Bestellcode	Bezeichnung	Stück
SP1481	Stahlrolle ALST Ø159×300 komplett	1
SP1233	Rolle mit Bronzelager	1
SP1480	ALST Rollachse Ø40×375 schraubbar	1
SD2466	ALST-Rollenhalter für DIN 30722-2	2

## Stahlrolle Ø203×200 SP1112



Bestellcode	Bezeichnung	Stück
SP1112	Stahlrolle Ø203×200 komplett	1
SP1113	Rolle	1
SD1250	Rollachse Ø40×295	1
SD1450	Rollenhalter	2

## Stahlrolle Ø220×200 SP1073

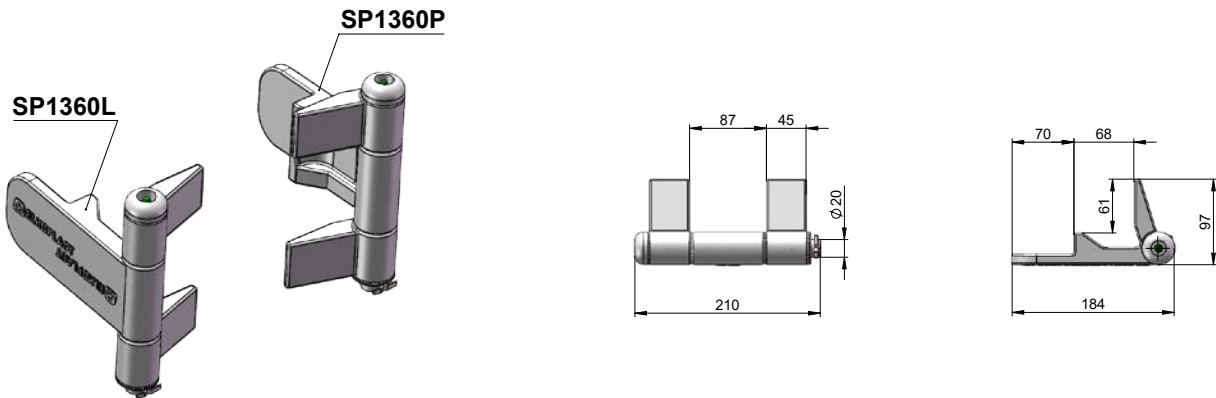


Bestellcode	Bezeichnung	Stück
SP1073	Stahlrolle Ø220×200 komplett	1
SP1075	Rolle	1
SD1250	Rollachse Ø40×295	1
SD1400	Rollenhalter 120×42	2

# Scharniere

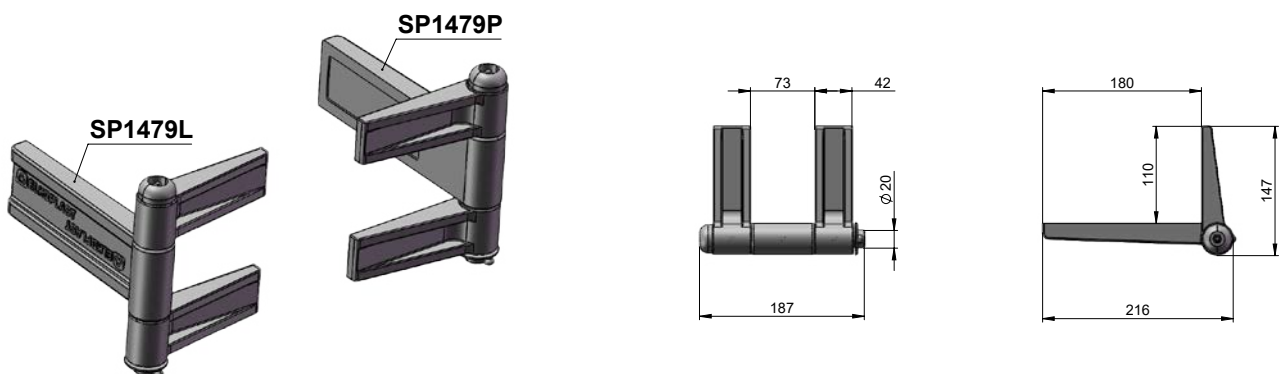


## Scharnier links SP1360L, rechts SP1360P



Bestellcode	Bezeichnung	Stück
SP1360L	Scharnier links	1
SP1360P	Scharnier rechts	1

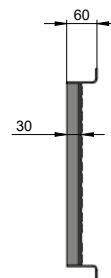
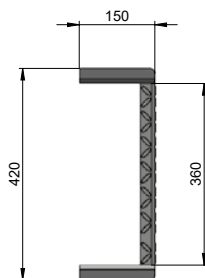
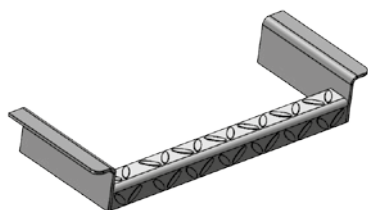
## Scharnier links SP1479L, rechts SP1479P



Bestellcode	Bezeichnung	Stück
SP1479L	Scharnier links	1
SP1479P	Scharnier rechts	1

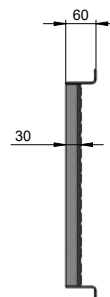
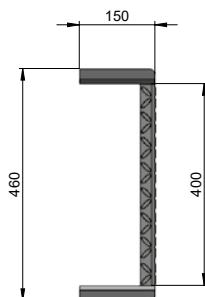
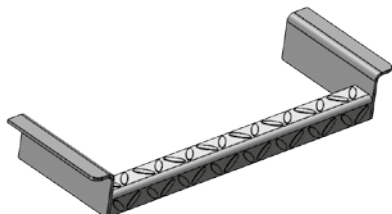


## Leitersprosse Typ ZA SP1483



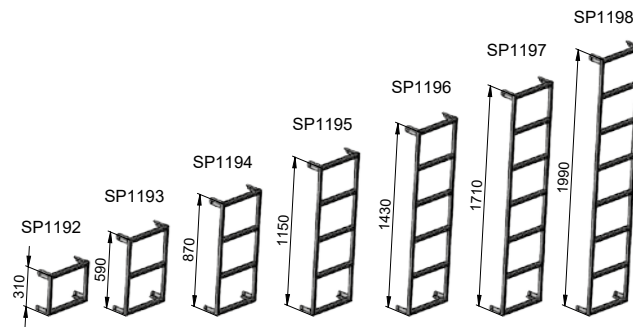
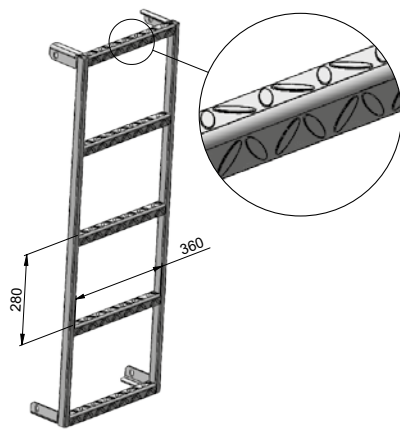
Bestellcode	Bezeichnung	Stück
SP1483	Leitersprosse Typ ZA	1

## Leitersprosse Typ ZA400 SP1514



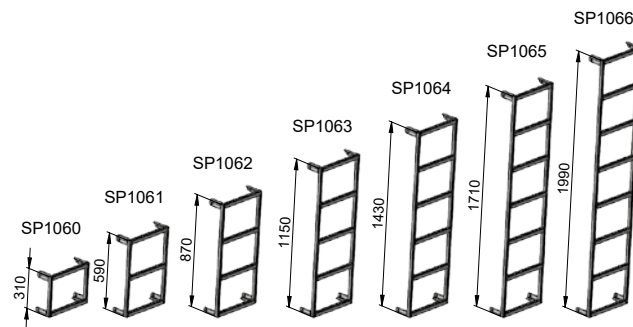
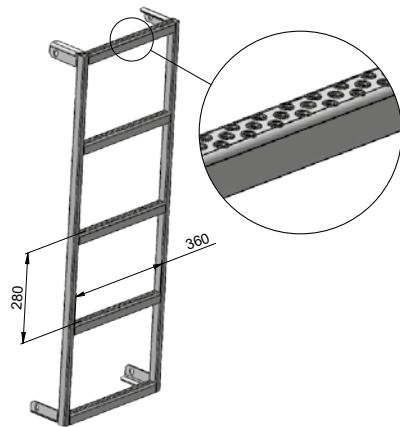
Bestellcode	Bezeichnung	Stück
SP1514	Leitersprosse Typ ZA400	1

## Leiter mit Tränensprosse Typ ZC SP1192-SP1198



Bestellcode	Bezeichnung	Stück
SP1192	Leiter Typ ZC 310 mm	1
SP1193	Leiter Typ ZC 590 mm	1
SP1194	Leiter Typ ZC 870 mm	1
SP1195	Leiter Typ ZC 1150 mm	1
SP1196	Leiter Typ ZC 1430 mm	1
SP1197	Leiter Typ ZC 1710 mm	1
SP1198	Leiter Typ ZC 1990 mm	1

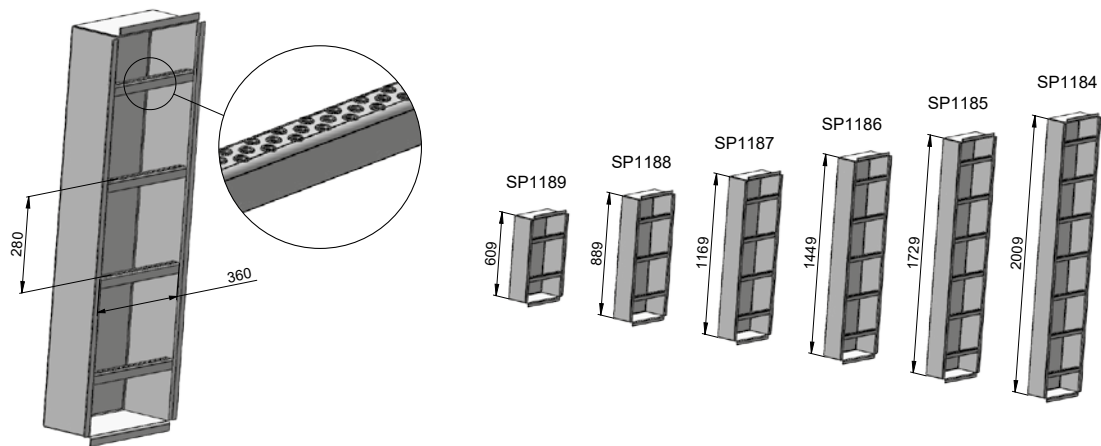
## Leiter mit gelochter Sprosse Typ ZD SP1060-1066



Bestellcode	Bezeichnung	Stück
SP1060	Leiter Typ ZC 310 mm	1
SP1061	Leiter Typ ZC 590 mm	1
SP1062	Leiter Typ ZC 870 mm	1
SP1063	Leiter Typ ZC 1150 mm	1
SP1064	Leiter Typ ZC 1430 mm	1
SP1065	Leiter Typ ZC 1710 mm	1
SP1066	Leiter Typ ZC 1990 mm	1



## Leitertyp ZU SP1184-SP1189

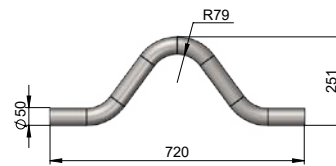


Bestellcode	Bezeichnung	Stück
SP1189	Leiter Typ ZU 609 mm	1
SP1188	Leiter Typ ZU 889 mm	1
SP1187	Leiter Typ ZU 1169 mm	1
SP1186	Leiter Typ ZU 1449 mm	1
SP1185	Leiter Typ ZU 1729 mm	1
SP1184	Leiter Typ ZU 2009 mm	1

# Aunahmehaken

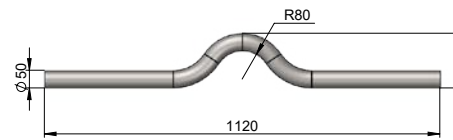


## Haken NA Ø50 SD1190



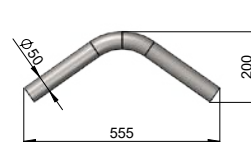
Bestellcode	Bezeichnung	Stück
SD1190	NA Haken Ø50	1

## Haken NA Ø50 SD1215



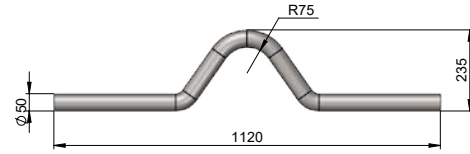
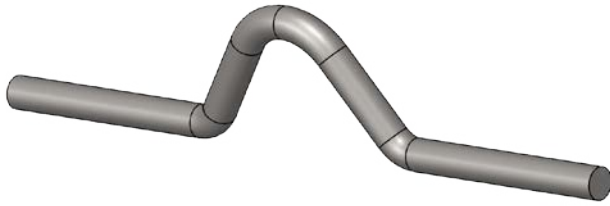
Bestellcode	Bezeichnung	Stück
SD1215	NA Haken Ø50	1

## Haken FR NA Ø50 SD1253



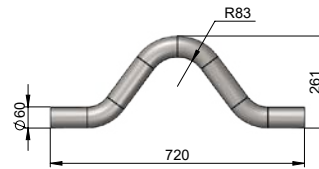
Bestellcode	Bezeichnung	Stück
SD1253	Haken FR NA Ø50	1

## Haken FR NLS Ø50 NL-SUEZ SD1319



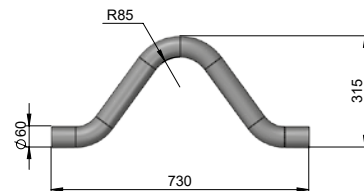
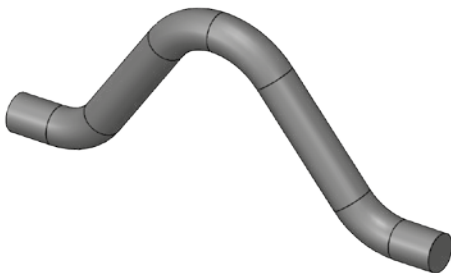
Bestellcode	Bezeichnung	Stück
SD1319	Haken FR NLS Ø50 NL-SUEZ	1

## Haken NA Ø60 SD1310



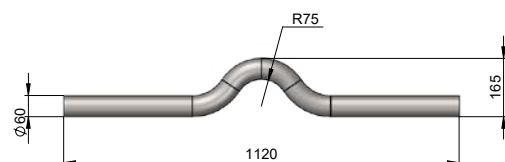
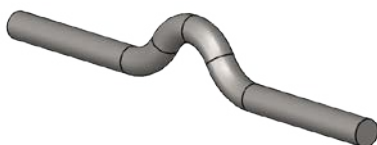
Bestellcode	Bezeichnung	Stück
SD1310	NA Haken Ø60	1

## Haken NA2 Ø60 SD2434



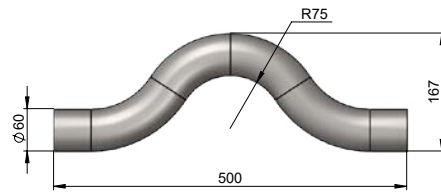
Bestellcode	Bezeichnung	Stück
SD2434	Haken NA2 Ø60	1

## Haken NH Ø60 SD1990



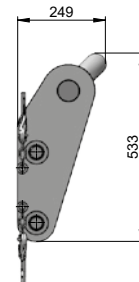
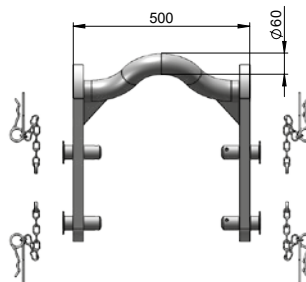
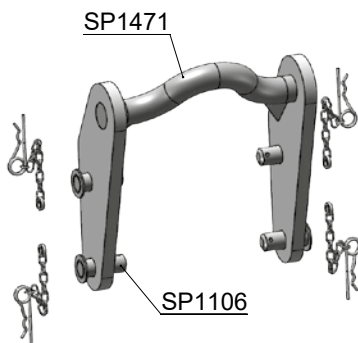
Bestellcode	Bezeichnung	Stück
SD1990	Haken NH Ø60	1

## Klapphaken NS Ø60 SD1323



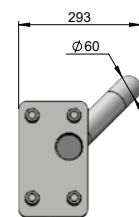
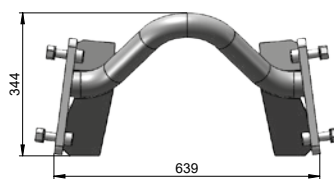
Bestellcode	Bezeichnung	Stück
SD1323	Klapphaken NS Ø60	1

## Klapphaken Ø60 SP1471



Bestellcode	Bezeichnung	Stück
SP1471	Klapphaken Ø60	1
SP1106	Pin	2

## Schraubhaken RMN Ø60 SP1531

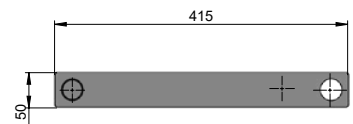
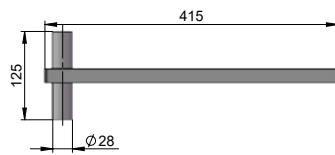
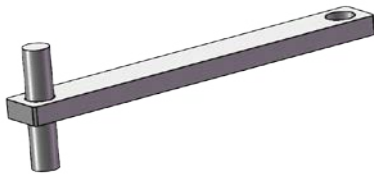


Bestellcode	Bezeichnung	Stück
SP1531	Schraubhaken RMN Ø60	1

# Türverriegelung

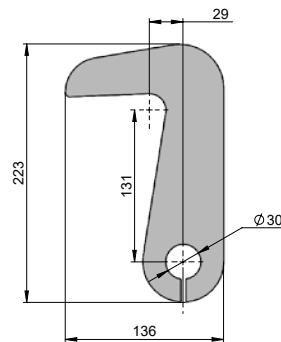
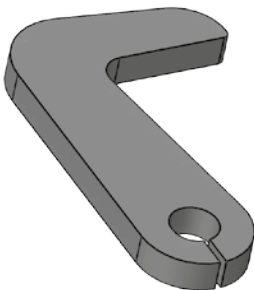


## Hebel Holländer-Verschluss SP1093



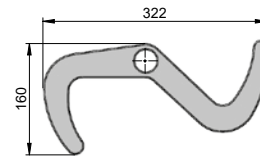
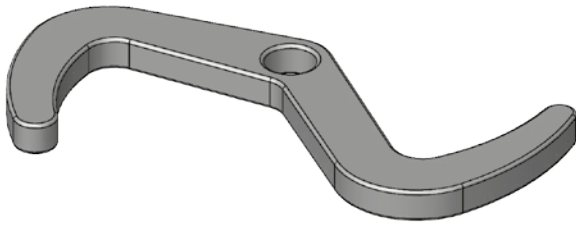
Bestellcode	Bezeichnung	Stück
SP1093	Hebel Holländer-Verschluss	1

## Unterer Verriegelungshaken SD1182



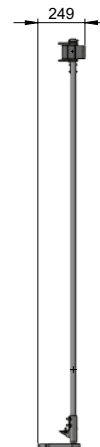
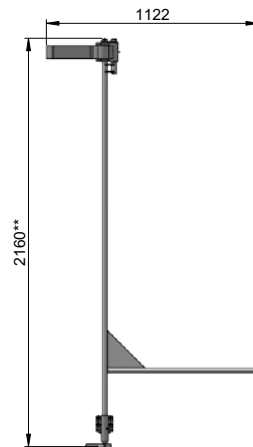
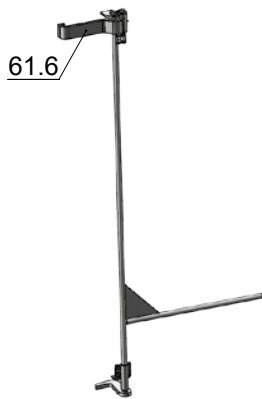
Bestellcode	Bezeichnung	Stück
SD1182	unterer Verriegelungshaken	1

## Verschluss S-Haken SD1183



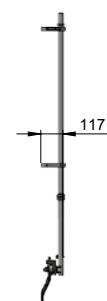
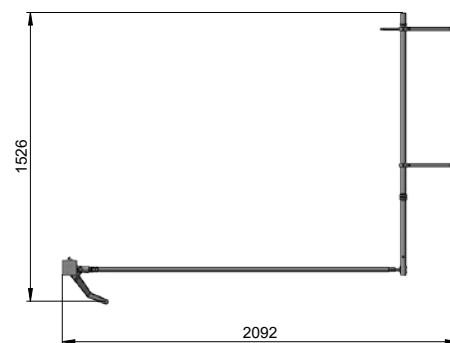
Bestellcode	Bezeichnung	Stück
SD1183	S-Haken	1

## Verriegelung VNL 61,5



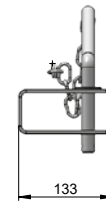
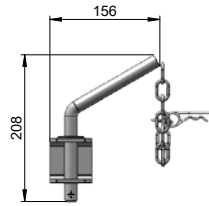
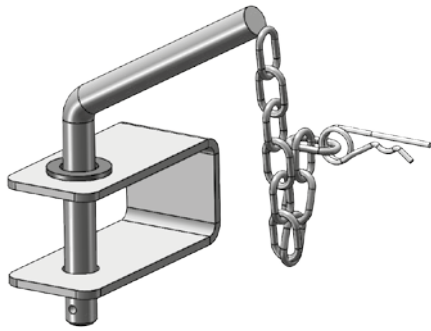
Bestellcode	Bezeichnung	Stück
61.5	Verriegelung VNL komplett	1
61.6	Oberer Haken	1

## Zentralverriegelung CRM



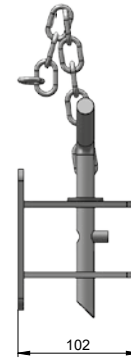
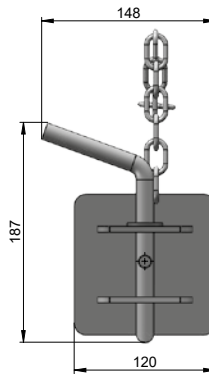
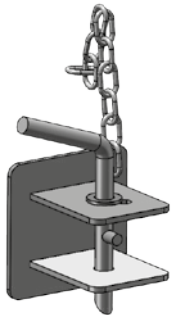
Bestellcode	Bezeichnung	Stück
CRM	Zentralverriegelung komplett	1
CRM1	Zentralverriegelung	1
CRM2	Hebel	1
CRM3	Verriegelungsstange	1

## Bolzen Verriegelungshebel SP1090



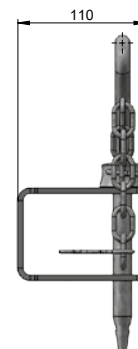
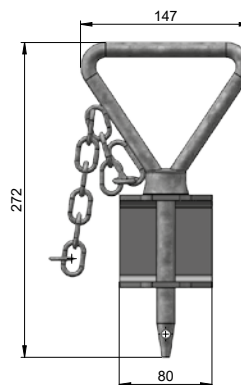
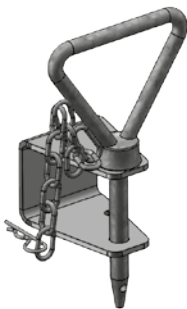
Bestellcode	Bezeichnung	Stück
SP1090	Bolzen Verriegelungshebel	1

## Bolzen Verriegelungshebel NLS SP1399



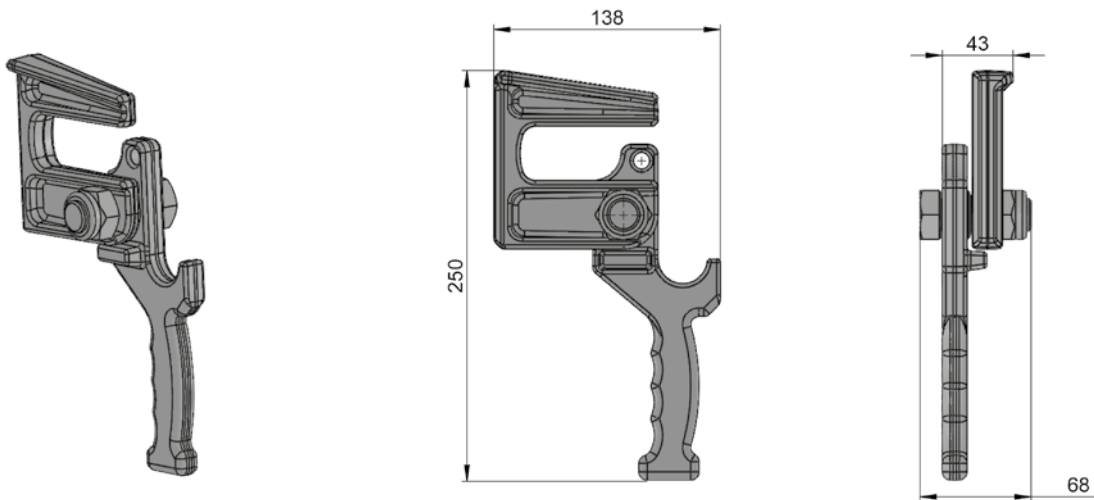
Bestellcode	Bezeichnung	Stück
SP1399	Bolzen Verriegelungshebel NLS	1

## IBolzen Verriegelungshebel SP1468



Bestellcode	Bezeichnung	Stück
SP1468	Bolzen Verriegelungshebel	1

## Sicherheitsverschluss Verriegelungshebel SD1285



Bestellcode	Bezeichnung	Stück
SD1285	Sicherheitsverschluss Verriegelungshebel	1

## Türsicherungskette SP1523



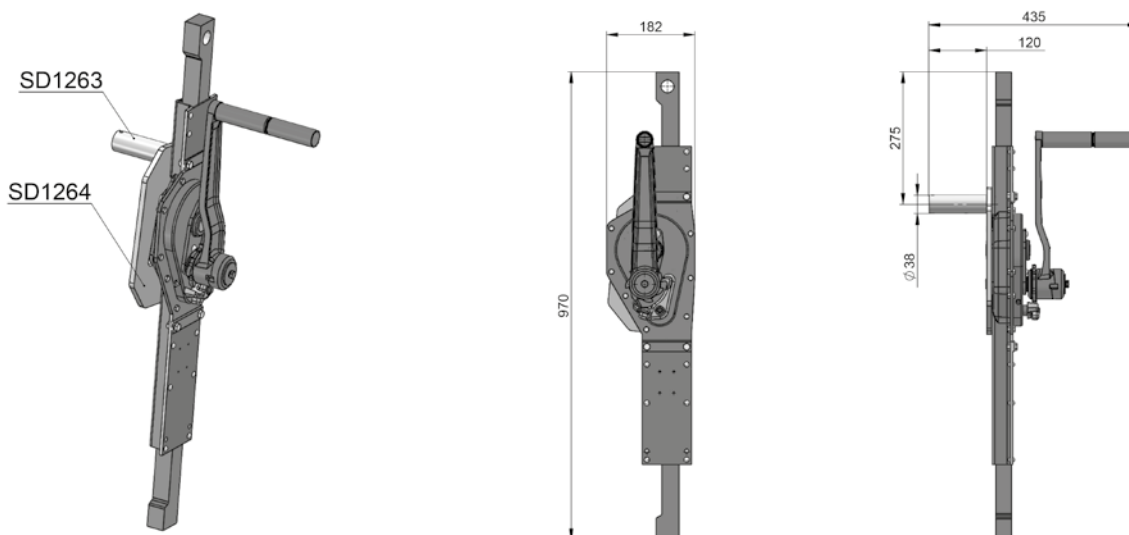
Bestellcode	Bezeichnung	Stück
SP1523	Türsicherungskette	1



# Dachheber



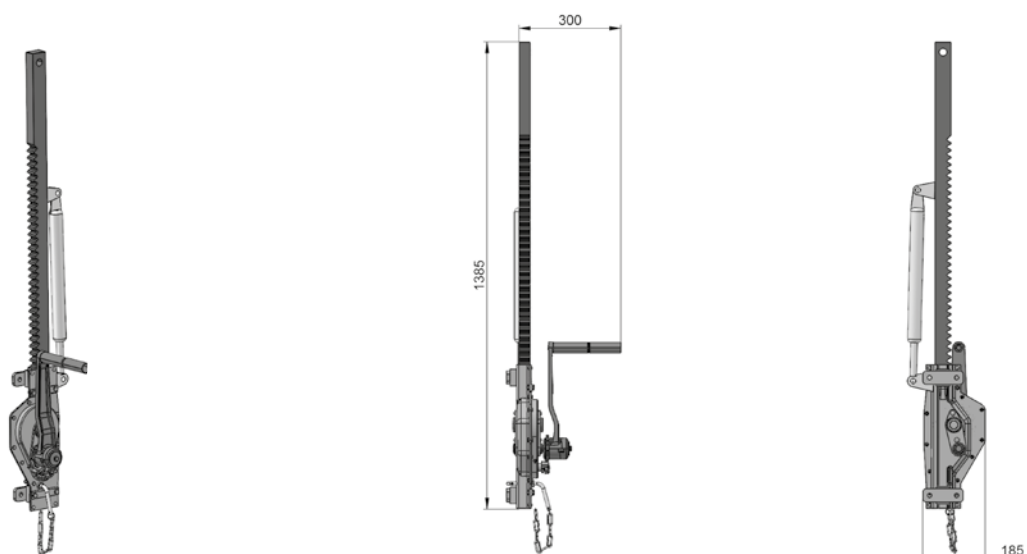
## Windenheber 5 t/970 mm SP1100/5/970



Bestellcode	Bezeichnung	Stück
SP1100/5/970	Windenheber 5 t komplett *	1
SD1209	Windenheber 5 t	1
SD1263	Windenbolzen Ø38×130	1
SD1264	Windenheberplatte	1

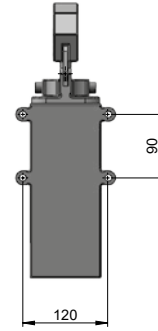
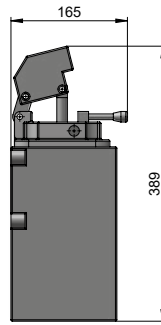
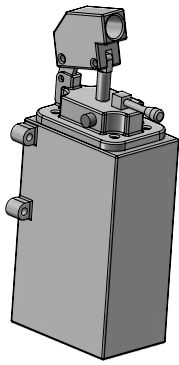
\* 5 t = Tragfähigkeit

## Windenheber mit Gasdruckstütze SP1100/V



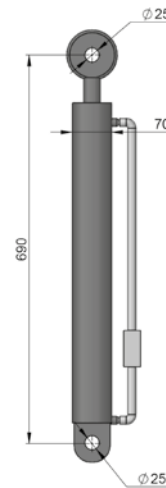
Bestellcode	Bezeichnung	Stück
SP1100/V	Windenheber mit Gasdruckstütze	1

## Hydraulikpumpe SD1203



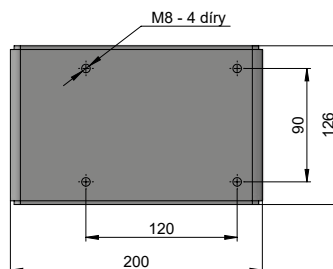
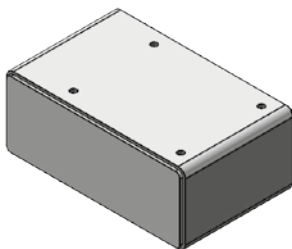
Bestellcode	Bezeichnung	Stück
SD1203	Hydraulikpumpe	1

## Hydraulischer Zylinder Ø70×690 SD1202



Bestellcode	Bezeichnung	Stück
SD1202	Hydraulischer Zylinder Ø70×690	1

## Hydraulikpumpenkonsole SP1101

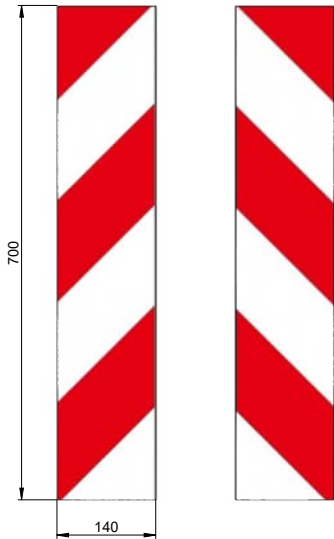


Bestellcode	Bezeichnung	Stück
SP1101	Hydraulikpumpenkonsole	1

# Andere Teile

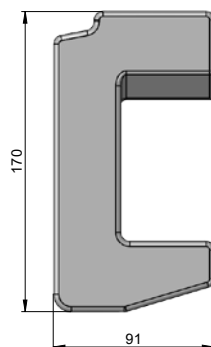
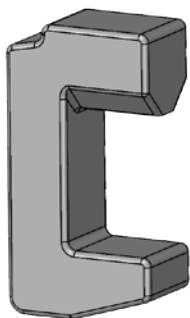


## Rot-weiße Warnstreifen



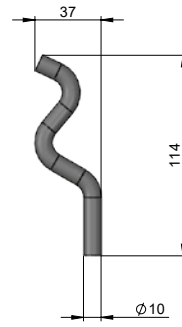
Bestellcode	Bezeichnung	Stück
260-70302	Warnstreifen rot-weiß rechts	1
260-70303	Warnstreifen rot weiß links	1

## C-Verriegelung Unterträger SD1185



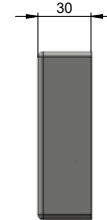
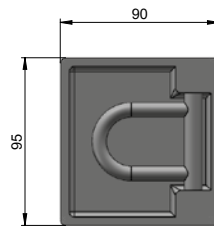
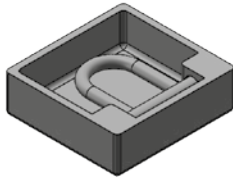
Bestellcode	Bezeichnung	Stück
SD1185	C-Verriegelung Unterträger	1

## Planenhaken SD1024



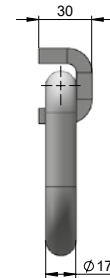
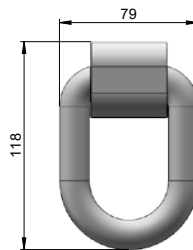
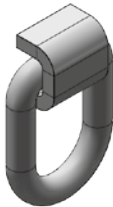
Bestellcode	Bezeichnung	Stück
SD1024	Planenhaken	1

## Ösenschale SD1100



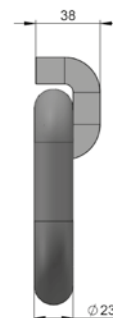
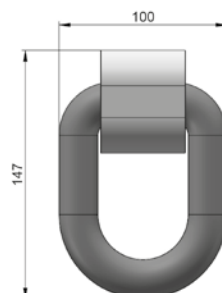
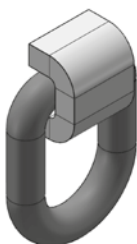
Bestellcode	Bezeichnung	Stück
SD1100	Ösenschale	1

## Kranöse 3,15t SD2573



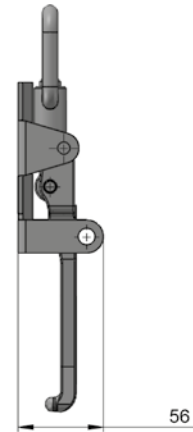
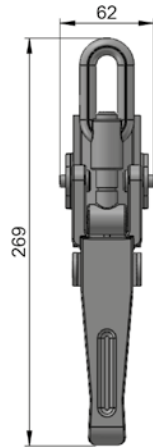
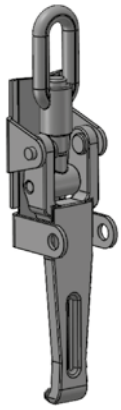
Bestellcode	Bezeichnung	Stück
SD2573	Kranöse 3,15 t	1

## Kranöse 5,3t SD2574



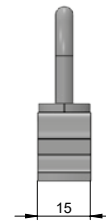
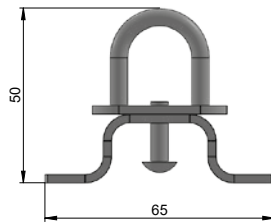
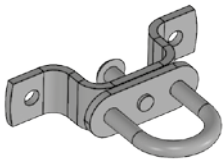
Bestellcode	Bezeichnung	Stück
SD2574	Kranöse 5,3 t	1

## Exzenterverschluss SD1208



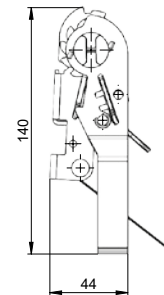
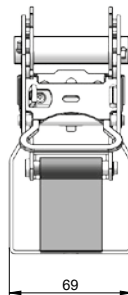
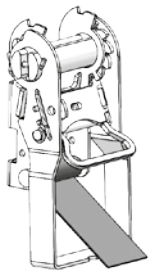
Bestellcode	Bezeichnung	Stück
SD1208	Exzenterverschluss	1

## TurnikettSD1402

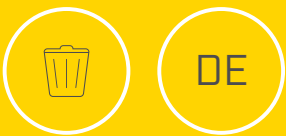


Bestellcode	Bezeichnung	Stück
SD1402	Turnikett	1

## Ratsche 35 mm für Spanngurt 150 cm SD2280



Bestellcode	Bezeichnung	Stück
SD2280	Ratsche 35 mm für Spanngurt 150 cm	1



## ELKOPLAST Deutschland GmbH

Schmiedberg 2,  
D-95100 Selb  
Germany  
e-mail: [info@elkoplast.de](mailto:info@elkoplast.de)  
tel.: +49 9287 9159 752

